

CERTIFICATE OF LOCATION OF GOVERNMENT CORNER

NORTH QUARTER Corner of Section 4, Township 106, Range 39, 5TH P.M.

STATE OF MINNESOTA, County of MURRAY

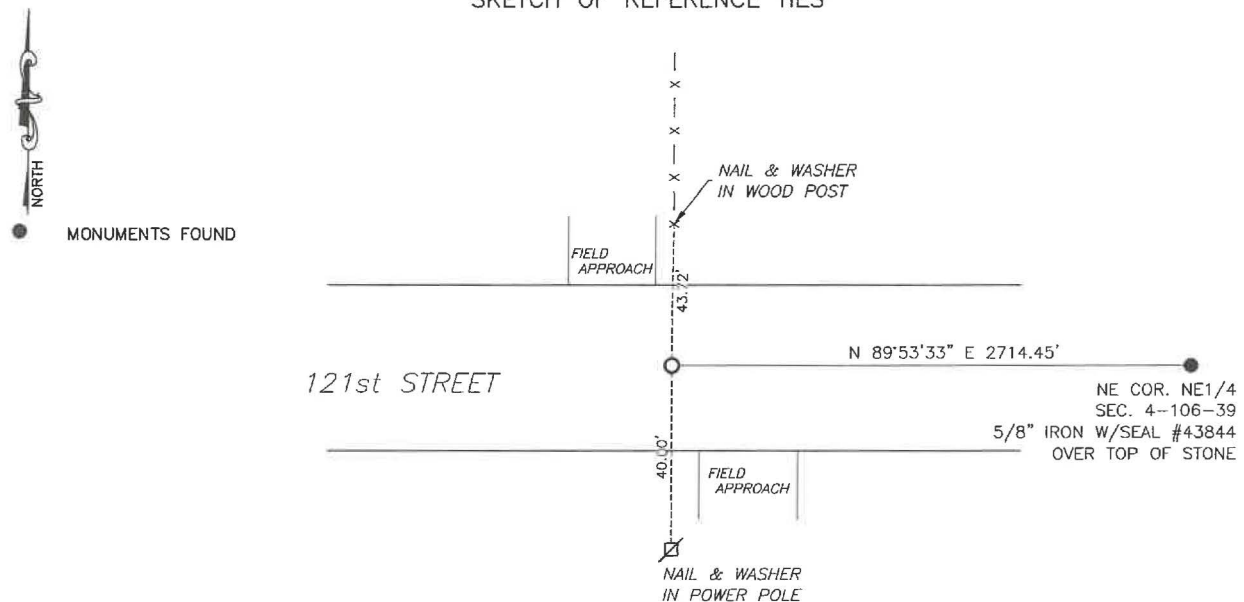
At the corner location shown on the sketch:

☒ On 7/22/2024 found a large pointed field stone with remnants of wood along side of
the stone

☒ left monument as found, ☐ lowered monument, ☐ removed monument (explain)

☒ On 1/16/2025 placed a 5/8" iron with seal #43844 over top of the stone.

SKETCH OF REFERENCE TIES

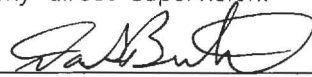


Murray County
Coordinate System NAD83 (1996)
N: 163469.466
E: 561514.806

WGS84
LAT: 44°01'18.8873"
LON: -95°31'58.1807"

Statement of evidence relative to this corner location is on back of page.

I hereby certify that this document and the data contained herein was prepared by me or under my direct supervision.



Daniel L. Bueltel
License No. 43844

3/12/2025
DATE

MAR 13 2025



MURRAY COUNTY RECORDER

Statement of Evidence

NORTH QUARTER CORNER SECTION 4, T106N, R39W of the 5th P.M.

In September 1858, W.J. Neely surveyed the east township line.

In July of 1861, J.W. Myers surveyed the north, south, and west township lines.

In August of 1861, Wellman & Smoot subdivided the township.

A survey of section 4 was done by J.W. Woolstencroft in June of 1895 but nothing was recorded at the corner.

On July 22, 2024 Bueltel-Moseng Land Surveying dug in the center line of the road and in line with the fence to the north. Found a large pointed field stone, accepted the stone and set a rerod on the south side of the stone for locating purposes.

Returned on January 16, 2025 and set a $\frac{5}{8}$ " iron with seal #43844 over top of the stone.